



# The Separation: Aspects Of Breaking Up

Hello Fabulous Australia!





# The Breakup

What you Will Learn Today

- First Questions and Considerations
- Key Planets Aspecting vs. Aspected
- Houses/ on Angles
- The Nodes!
- Midpoints
- Celebrity Charts!





**Matthew Hussey** 

@matthewhussey

310-935-3460

It's okay to be disappointed that someone wasn't the one. What you mustn't do is grieve as though they were the one.



# First Questions

## And Considerations

- How big a deal is this breakup?
  - Are several big transits taking place? They can help us understand how much of a catalyst moment this is
  - How fragile is the person who might be going through/ will go through a breakup?
- How long have they been together?
  - Long term relationships ending often brings Saturn into the mix, shorter relationships can be broken apart by Mars
  - Not being together a long time doesn't mean there can't be a big impact.
- What kept the relationship together?
  - Are there other factors to consider, like family, status, etc.
- Whats happening in the composite?
  - The stronger the bond, the more likely the break will show in the composite





# Planets Being Aspected

In The Natal or Composite

- Love planets being aspected by big planets are a game changer, in the composite, or the natal chart of one of the people in the relationship
- We often see several aspects when a big breakup or life changing events are happening
- I personally start with Outer Planet Transits, from furthest out to the most personals, but also, what happened on the lead up to them
- I like to look to angles first, as they represent sweeping changes
- Easy aspects bring embrace and peace with the changes, hard aspects feel much harder. Squares are deep frustration, oppositions can feel surprising, as if the breakup comes from outside what we thought or we wanted. We often get a mix of both.





# The Main Love Planets- The Moon

- In prediction, can indicate how a living situation can affect the relationship
- An emotional shift or change
- How emotionally safe do you still feel with this person?
- Emotional ease or frustration
- Emotional connection or discord?





# The Main Love Planets- Venus

- A change of affections
- The beauty you feel and see
- The sweetness, or lack of it
- How 'nice' you think someone is to you





# The Main Love Planets- Mars

- Mars is sex- is it dead? This is sometimes a symptom of not feel closeness
- How you express discontent/ fight
- Too strong a Mars in the composite or synastry is Passion and anger- it will tire you out!
- Chemistry can be strong, even if compatibility isn't





# The Main Love Planets- Saturn

- Remember- Saturn keeps you together! It therefore follows, Saturn aspected by big planets can challenge or change the status of the commitment
- Fidelity, and how it is defined
- How stable does the relationship feel?





# The Main Self-Love Planet- The Sun

- Not a love planet, but a planet of self-knowledge, and usually significant in breakups
- Does this relationship still represent the truth of who you are. Does it bring healthy growth, and a type of dynamic peace?
- What you deserve
- Does this person treat you like you are special?





# Saturn Aspecting

- Really thinking it/ considering the change thoroughly
- Changes are likely to stick, they are considered consequential
- Can you go on like this indefinitely?
- The type of pain that comes from being honest and accepting limits
- What is this person actually showing you?
- Breakups come slowly with Saturn aspects- often at the end of the transit

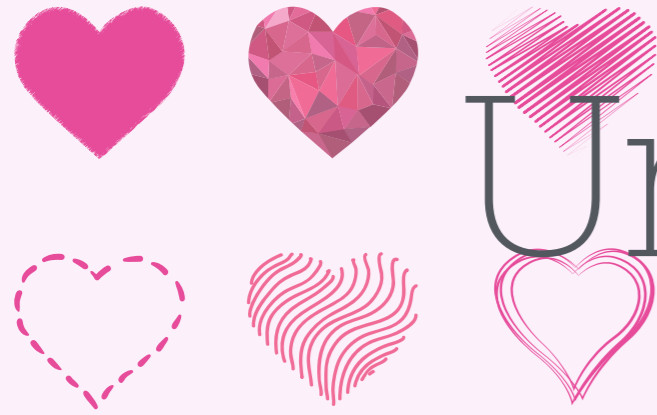




# Jupiter Aspecting

- Jupiter: Hope & growth
- Faith to go another way
- Faith that something, anything, has to be better than this
- A sense of the possible, whether or not it is accurate





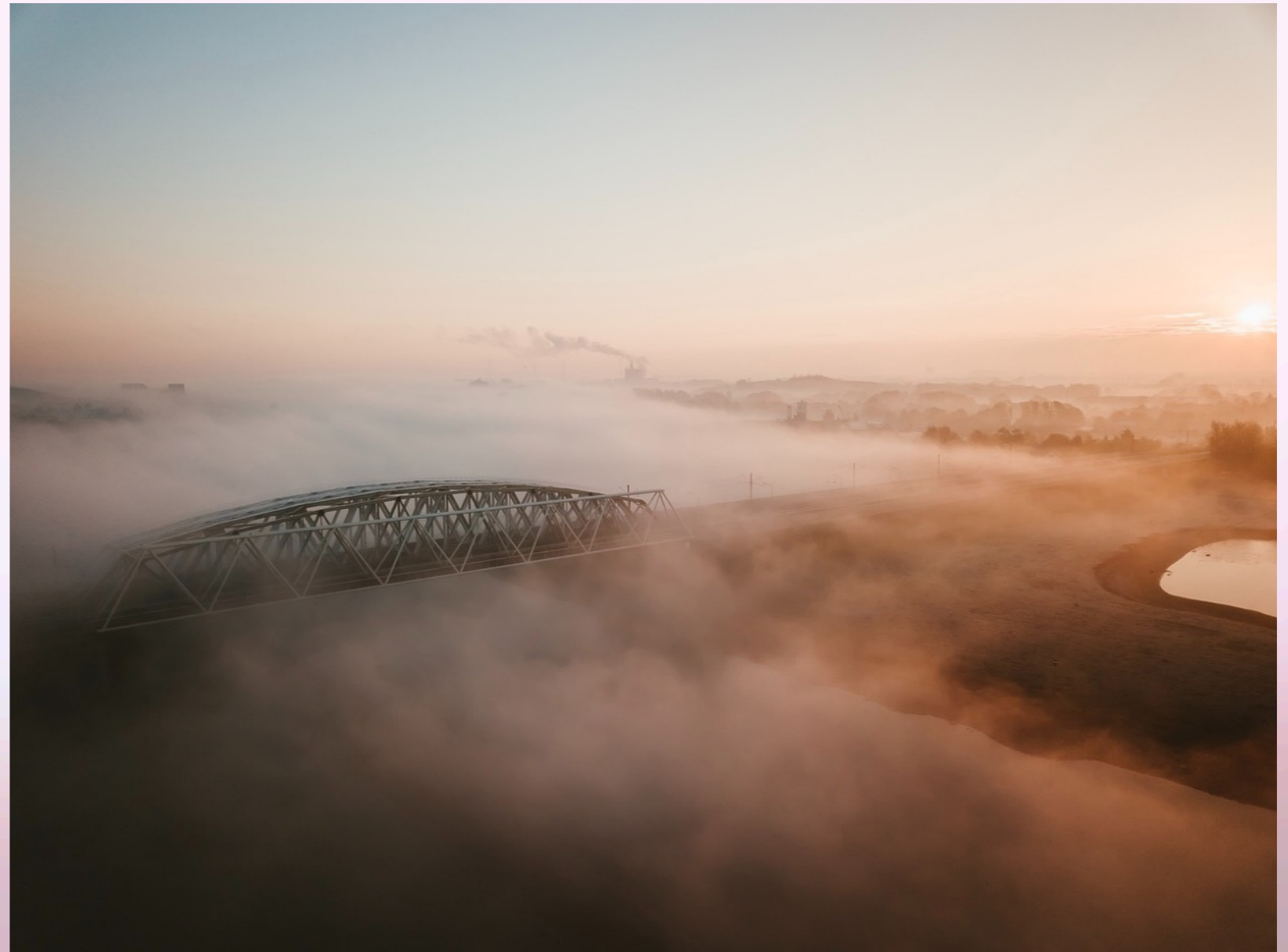
# Uranus Aspecting

- The sudden truth
- The big break
- Dramatic change
- Like ripping off a bandage
- In an instant, you know when you are done
- Being true to yourself, no matter what anyone thinks about it



# Neptune Aspecting

- Washing away
- Disappointed one too many times
- Sadness or regret
- Easy aspects can have you seeing the makeup or breakup too idealistically





# Pluto Aspecting

- Unfairness or Cruelty
- The cold, hard truth
- Feelings of abuse
- Rebirth, transformations
- More afraid for things to not change





# Mars Aspecting

- Often serves as the 'spark'
- Helps to manifest the last stand, or final moment, where we finally get honest about the big energies of outer planets that have been simmering under the surface





# The Angles & Houses

Awakening Key Areas Of life

- Aspects to the angles wake up the entire chart, and bring changes
- Planets that are in an angular house and being aspected can indicate big life changes, that have a sweeping affect, whether or not it is a love planet
- Aspects right on the angles are strongest.





# The Angles & Houses

## Awakening Key Areas Of life

- AC: The self, your truth, who you know yourself to be- does this relationship still align with your identity?
- DC: Where you are in partnership and how you feel about it. Big transits to the 7th house mean that the relationship will go through an evolution or no longer continue
- IC: Privacy and the foundations of your life- will they be rocked? Does the living situation change?
- MC: What is your destiny? Where are you actually heading in a larger sense, and does this person go with you?

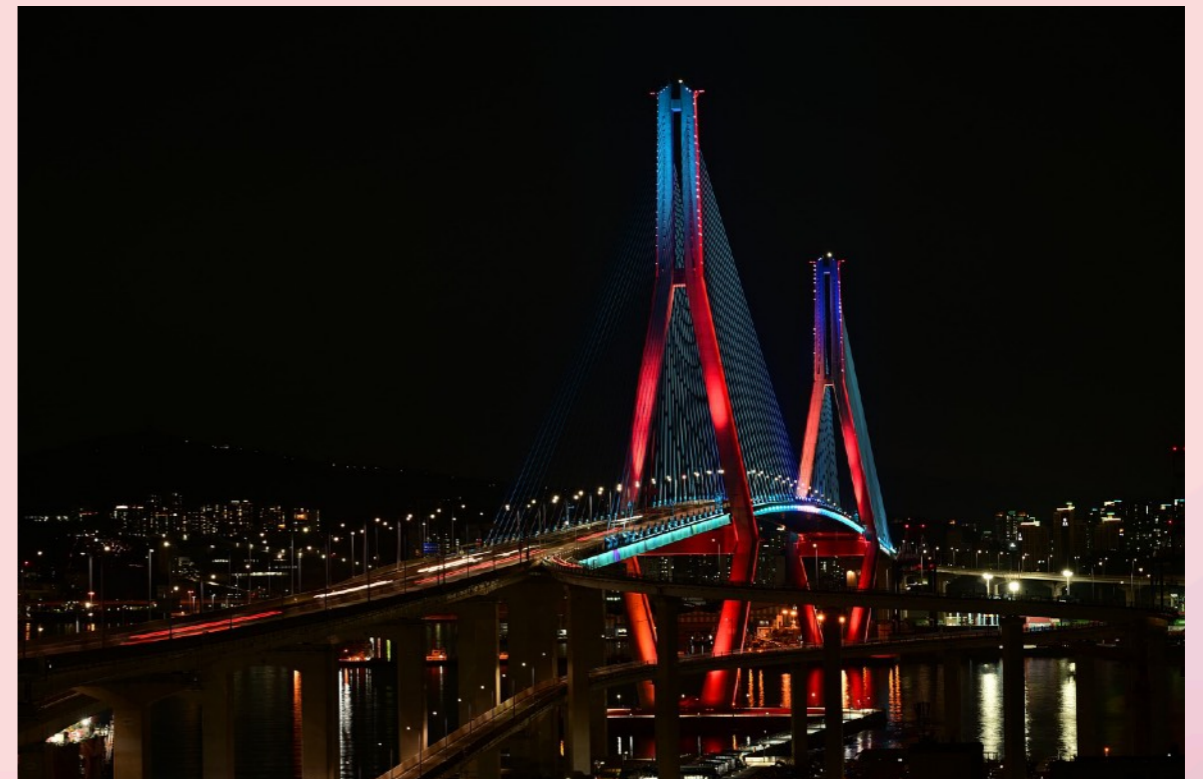




# The Nodes!

Karmic Paths Aren't Always Forever

- The South Node often brings the end of karmic contracts, and big life chapters
  - Activations of the South Node bring about the lower vibration of the planets and signs incorporated
- The North Node brings new chapters
  - Beginning again, or new karmic paths, open up. Higher vibrations become dominant of the planet or sign

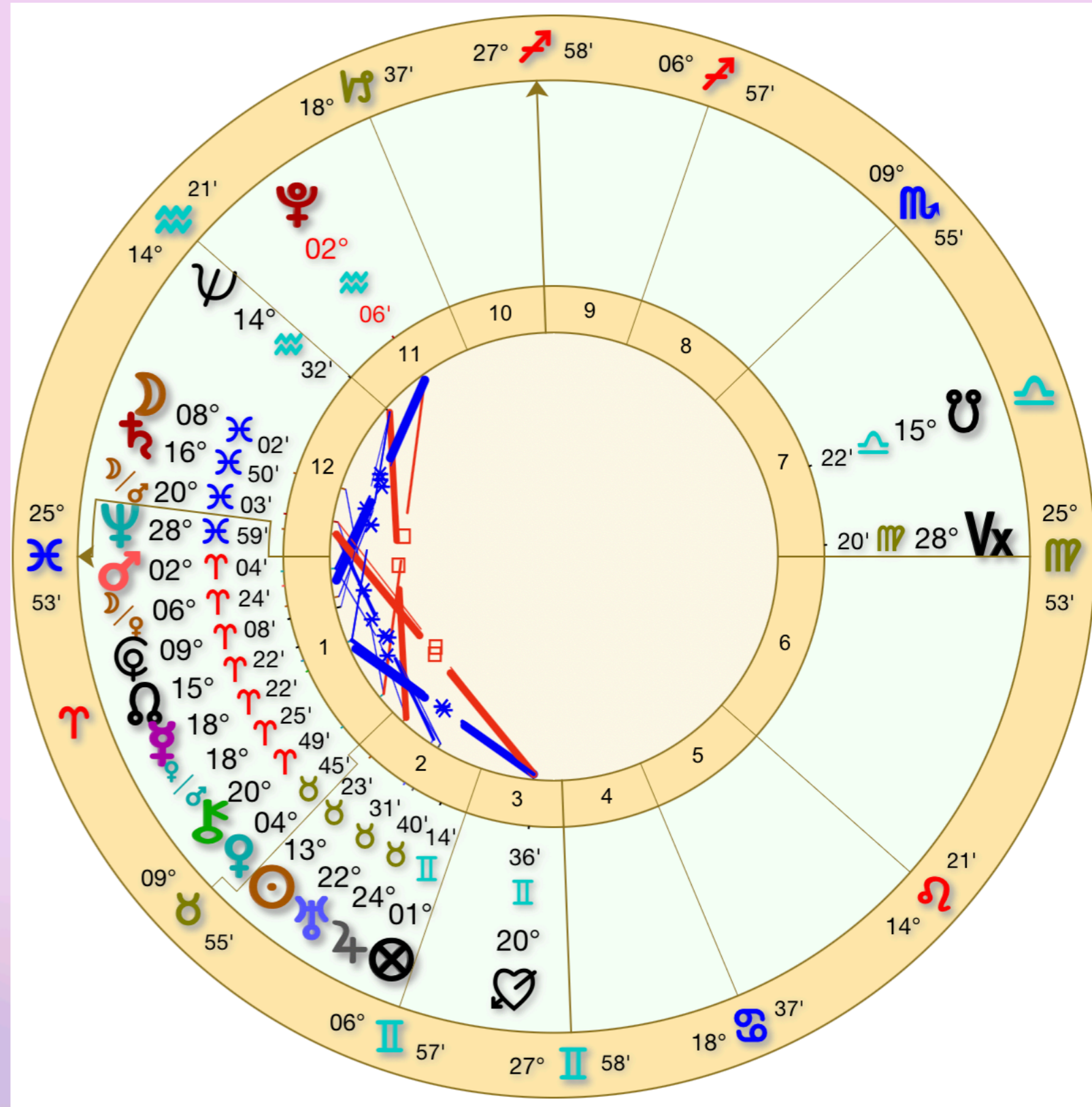




# Midpoints

In Composite & Natal

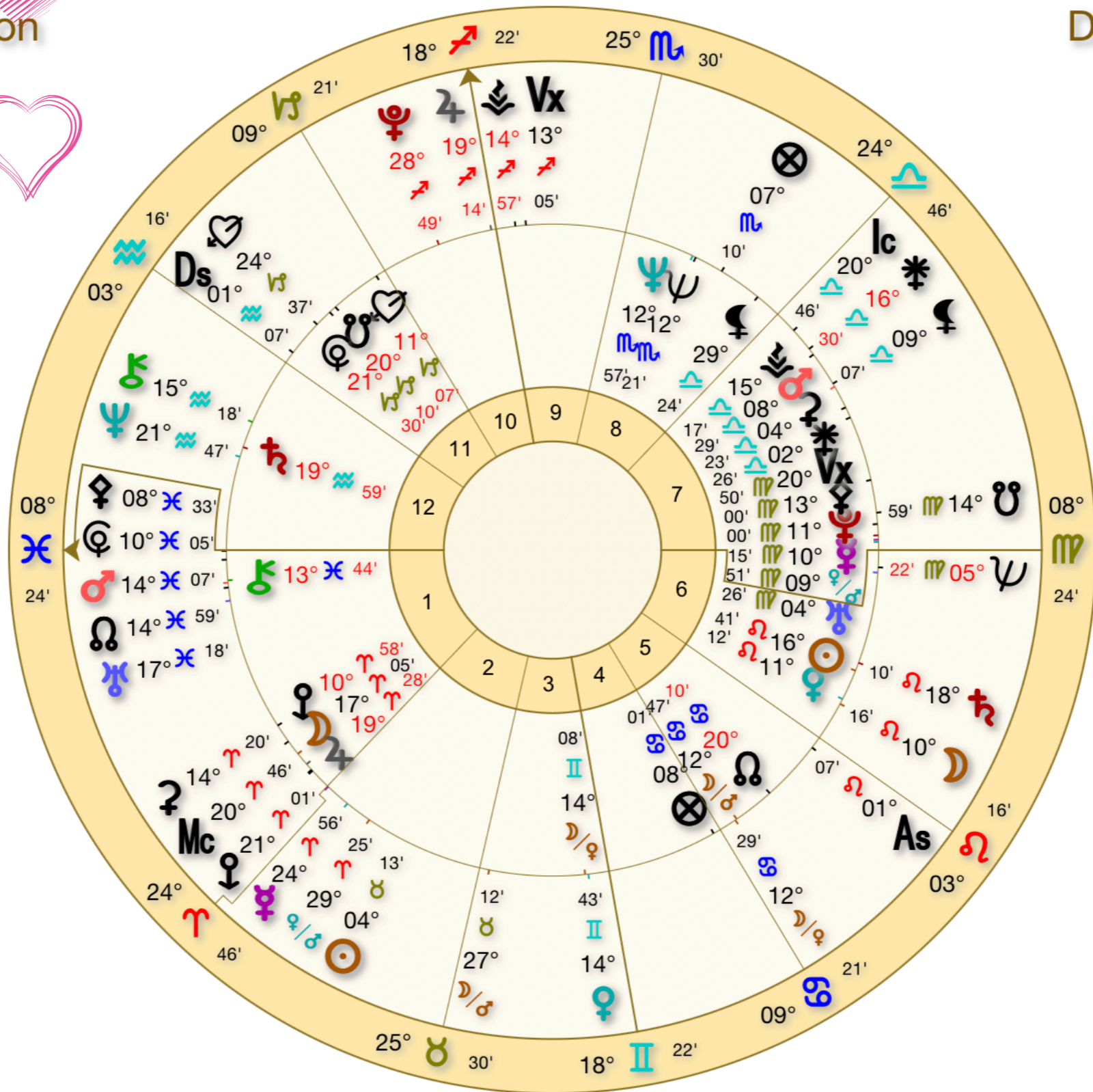
- A more advanced technique
- Points of Prediction
- A big planet on a love midpoint can often bring changes that come in, and can feel like a 'kick'





# Whitney Houston

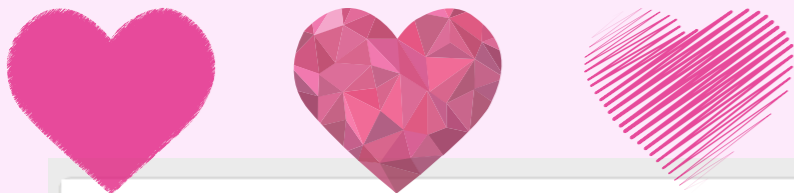
Female  
 Inner Ring  
 Aug 9 1963, Fri  
 8:55 PM +4:00  
 Newark, New Jersey  
 Geocentric  
 Tropical  
 Placidus



# Divorce Finalized

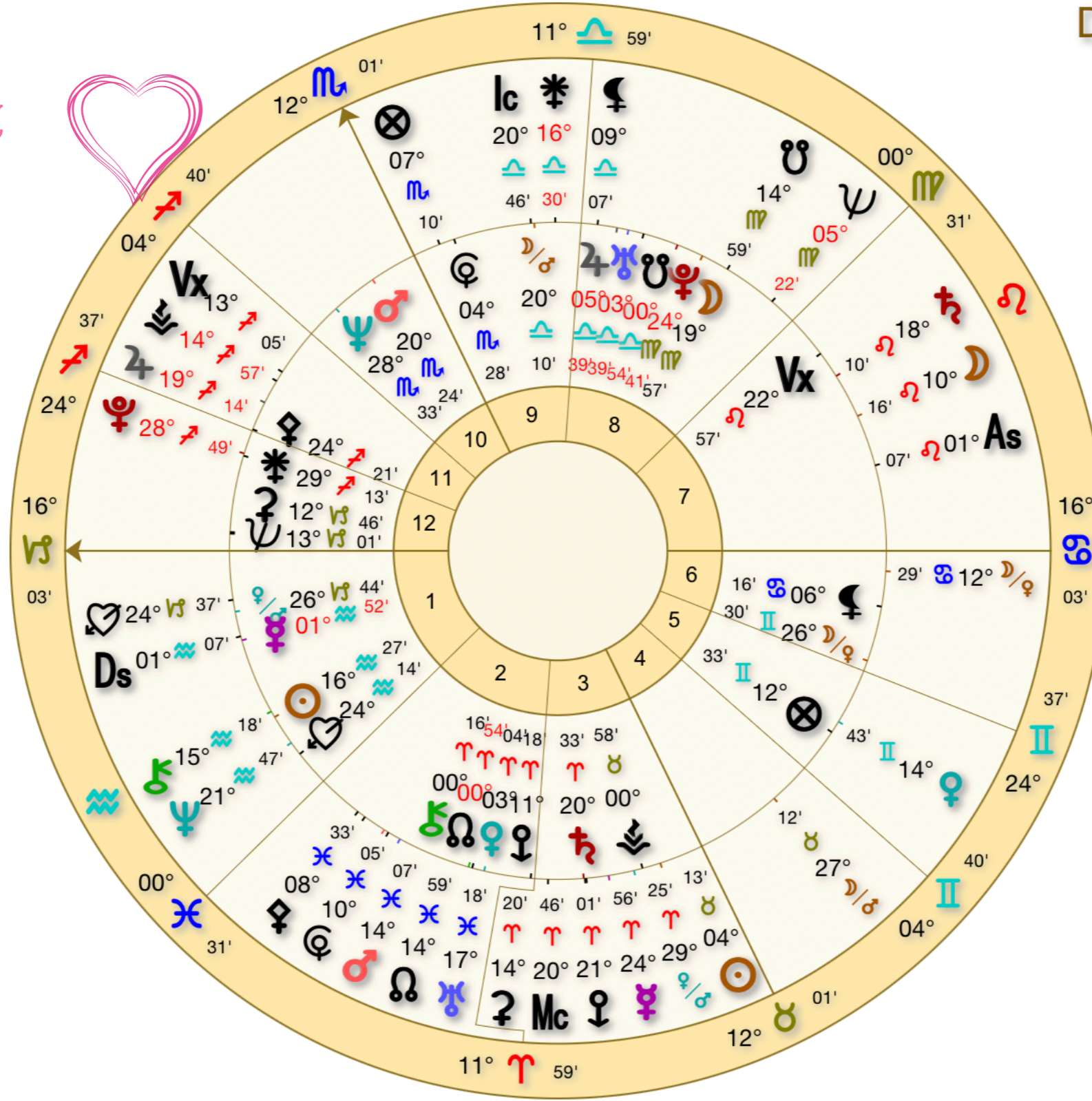
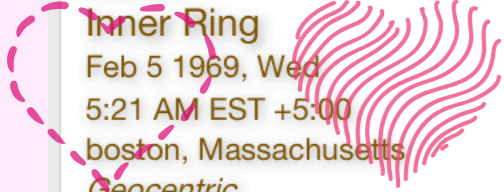
Natal  
 Outer Ring  
 Apr 24 2007, Tue  
 12:00 PM PDT +7:00  
 Los Angeles, California  
 Geocentric  
 Tropical  
 Placidus

- Saturn conjunct Sun & Saturn Opposition
- Chiron and Neptune conjunct Saturn
- Mars, NN and Uranus conjunct Chiron
- Jupiter Conjunct MC, trine Sun
- Eros Return (every 643 days), conjunct South Node



# Bobby Brown

Natal  
 Inner Ring  
 Feb 5 1969, Wed  
 5:21 AM EST +5:00  
 Boston, Massachusetts  
 Geocentric  
 Tropical  
 Placidus



# Divorce Finalized

Natal  
 Outer Ring  
 Apr 24 2007, Tue  
 12:00 PM PDT +7:00  
 Los Angeles, California  
 Geocentric  
 Tropical  
 Placidus

- Saturn Trine natal Saturn, Opposite Sun, Square Mars
- Chiron Neptune conjunct Sun & Eros
- Eros conjunct Venus Mars Midpoint
- Pluto square Pluto, conjunct Juno
- Jupiter Square Moon
- Uranus Mars NN oppose Moon



# Whitney Houston + Bobby Brown

Composite - Midpoints

Inner Ring

Aug 9 1963, Fri

8:55 PM +4:00

Newark, New Jersey

Geocentric

Tropical

\*Composite



# Divorce Finalized

Natal

Outer Ring

Apr 24 2007, Tue

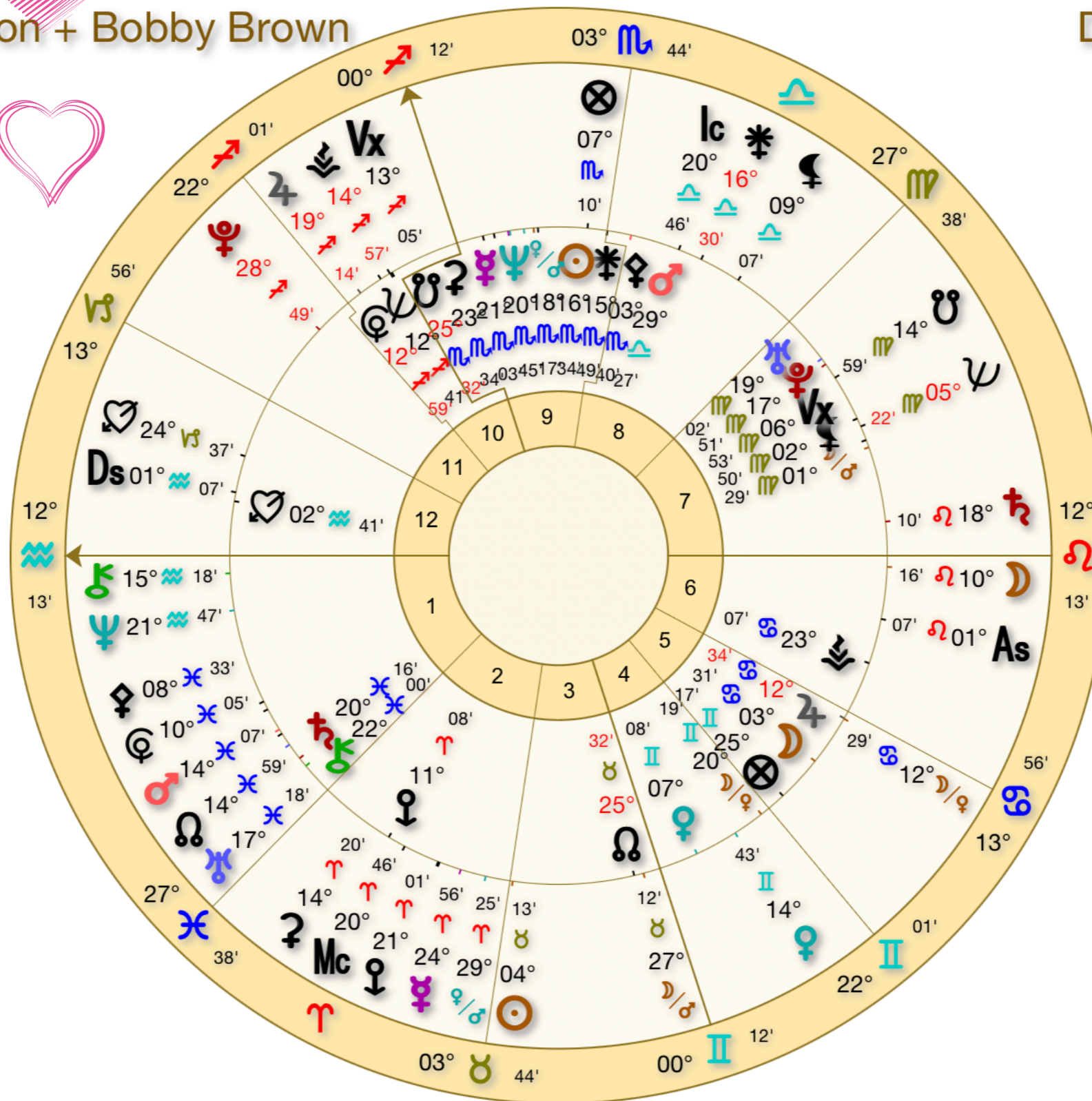
12:00 PM PDT +7:00

Los angeles, california

Geocentric

Tropical

Placidus



- Saturn conjunct DC, square Sun
- Pluto sextile Mars
- Pluto just starting opposition to Moon
- Chiron Neptune conjunct AC
- Uranus Mars NN conjunct Saturn Chiron, opposite Uranus Pluto

# Brad Pitt

Male

Inner Ring

Dec 18 1963, Wed

6:31 AM CST +6:00

Shawnee, Oklahoma

Geocentric

Tropical

Placidus

# Angelina Files For Divorce

Natal

Outer Ring

Sep 20 2016, Tue

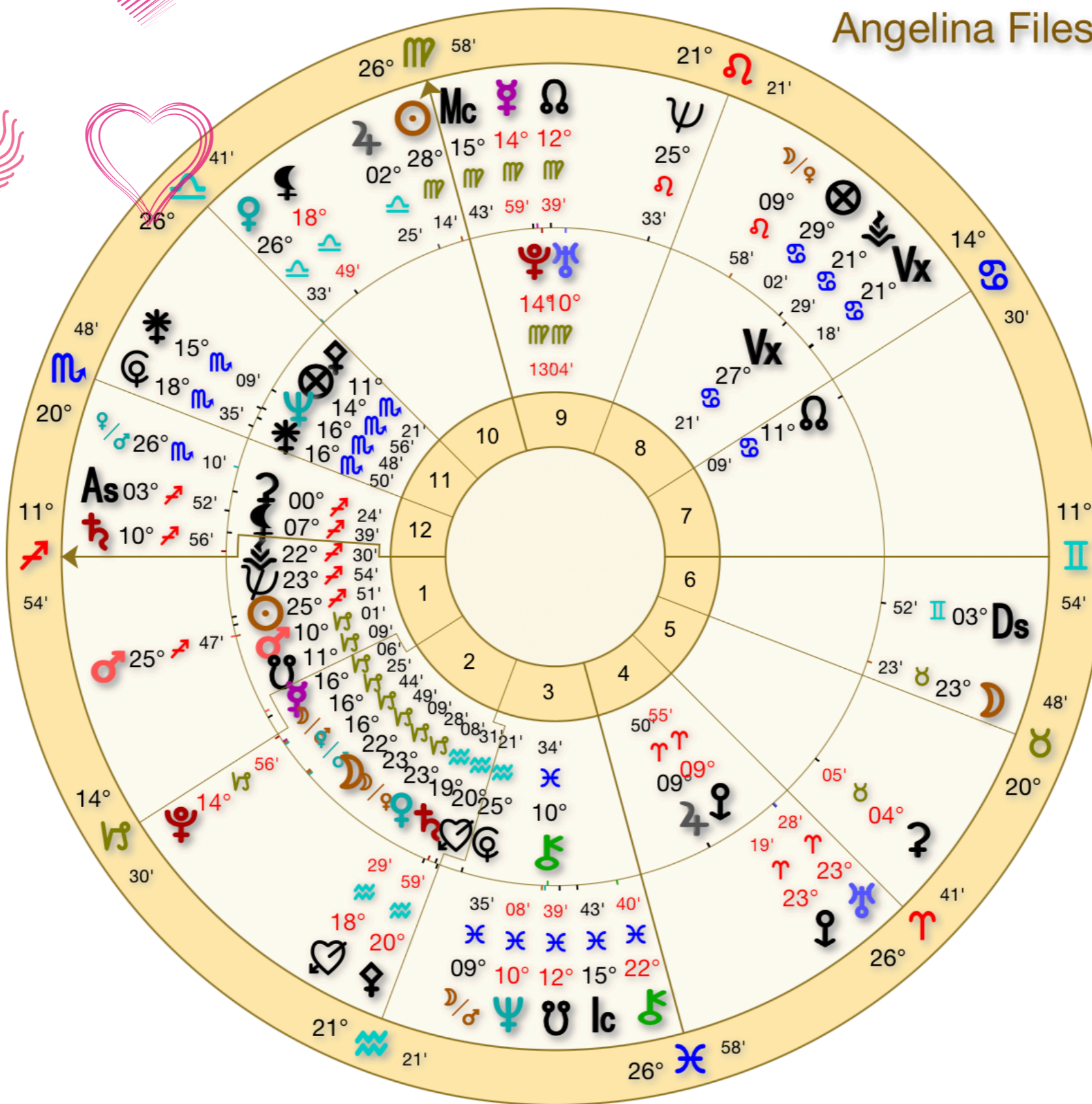
12:00 PM PDT +7:00

Los Angeles, California

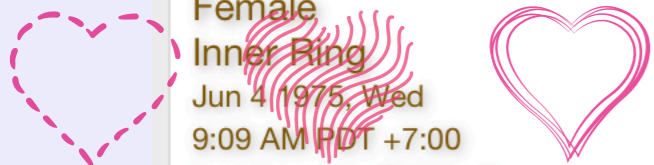
Geocentric

Tropical

Placidus



- Saturn conjunct AC, square Pluto Uranus
- Jupiter conjunct MC, starting to sextile AC and sag planets, but square Capricorn planets, oppose Jupiter
- Neptune conjunct Chiron
- Chiron conjunct IC

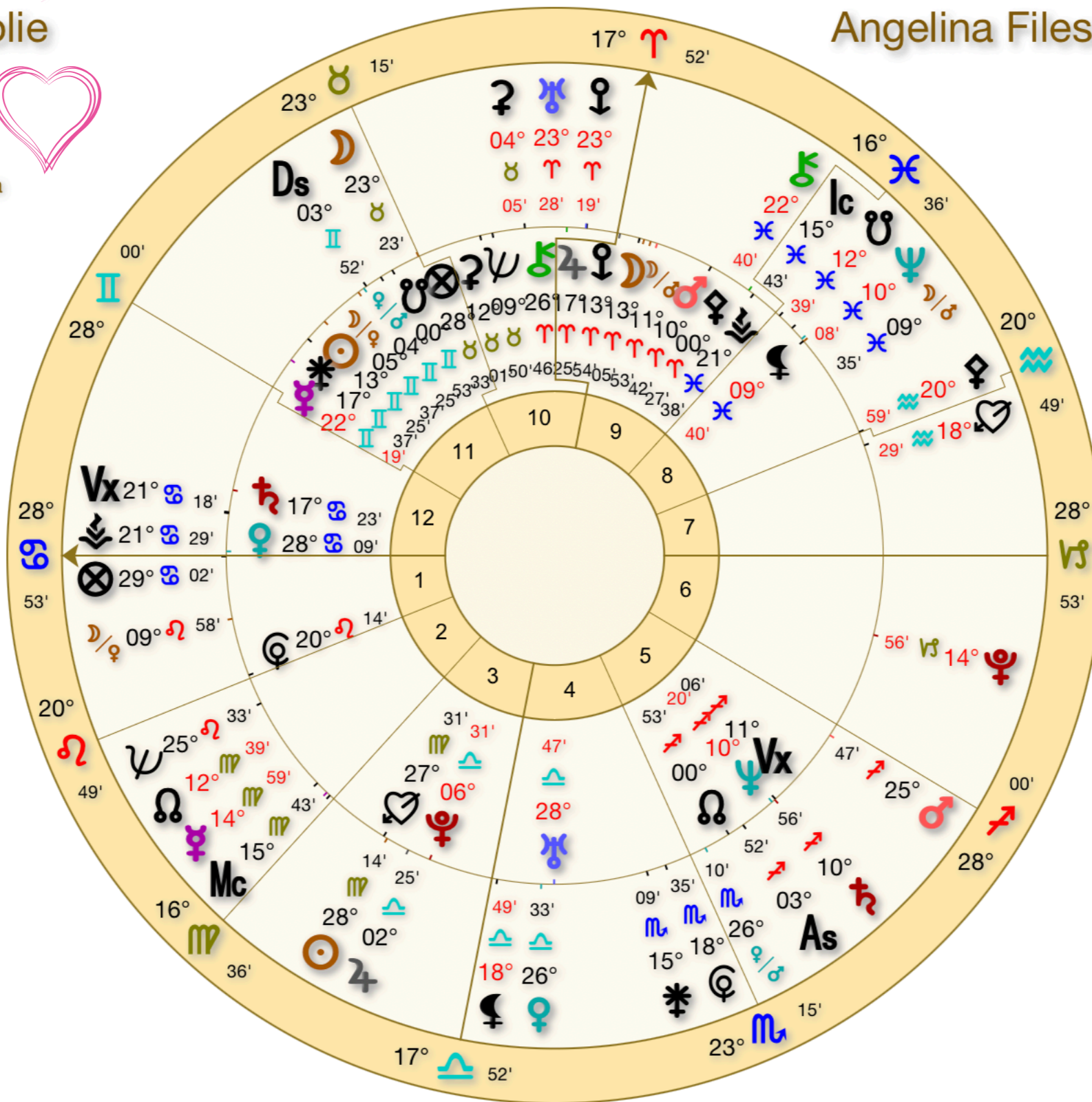


# Angelina Jolie

Female  
 Inner Ring  
 Jun 4 1975, Wed  
 9:09 AM PDT +7:00  
 Los Angeles, California  
 Geocentric  
 Tropical  
 Placidus

# Angelina Files For Divorce

Natal  
 Outer Ring  
 Sep 20 2016, Tue  
 12:00 PM PDT +7:00  
 Los Angeles, California  
 Geocentric  
 Tropical  
 Placidus



- Uranus conjunct MC & Chiron, having moved over all those Aries planets already
- Saturn conjunct Neptune
- Jupiter starts to oppose Aries planets, and trine Gemini planets, conjunct Pluto
- Pluto trine Moon



### Angelina Jolie + Brad Pitt

Composite - Midpoints

Inner Ring

Jun 4 1975, Wed

9:09 AM PDT +7:00

Los Angeles, California

Geocentric

Tropical

\*Composite



### Angelina Files For Divorce

Natal

Outer Ring

Sep 20 2016, Tue

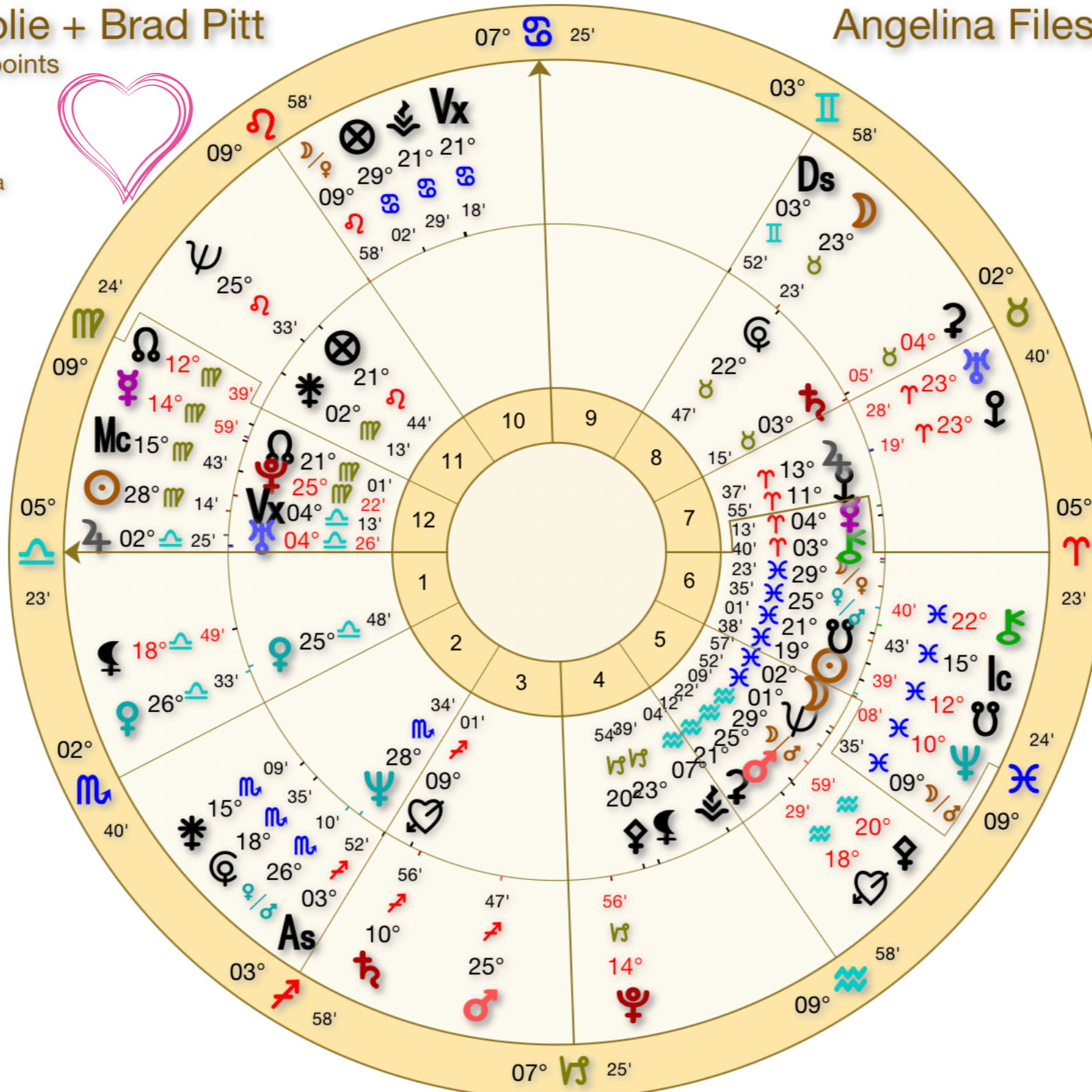
12:00 PM PDT +7:00

Los Angeles, California

Geocentric

Tropical

Placidus



- Jupiter conjunct AC, Uranus, oppose Chiron
- Chiron on SN, Venus Mars Midpoint, Sun
- Neptune having moved over the moon can represent the living situation having changed a while before the divorce was filed
- Saturn conjunct eros, having squared the moon and gearing up to square the sun



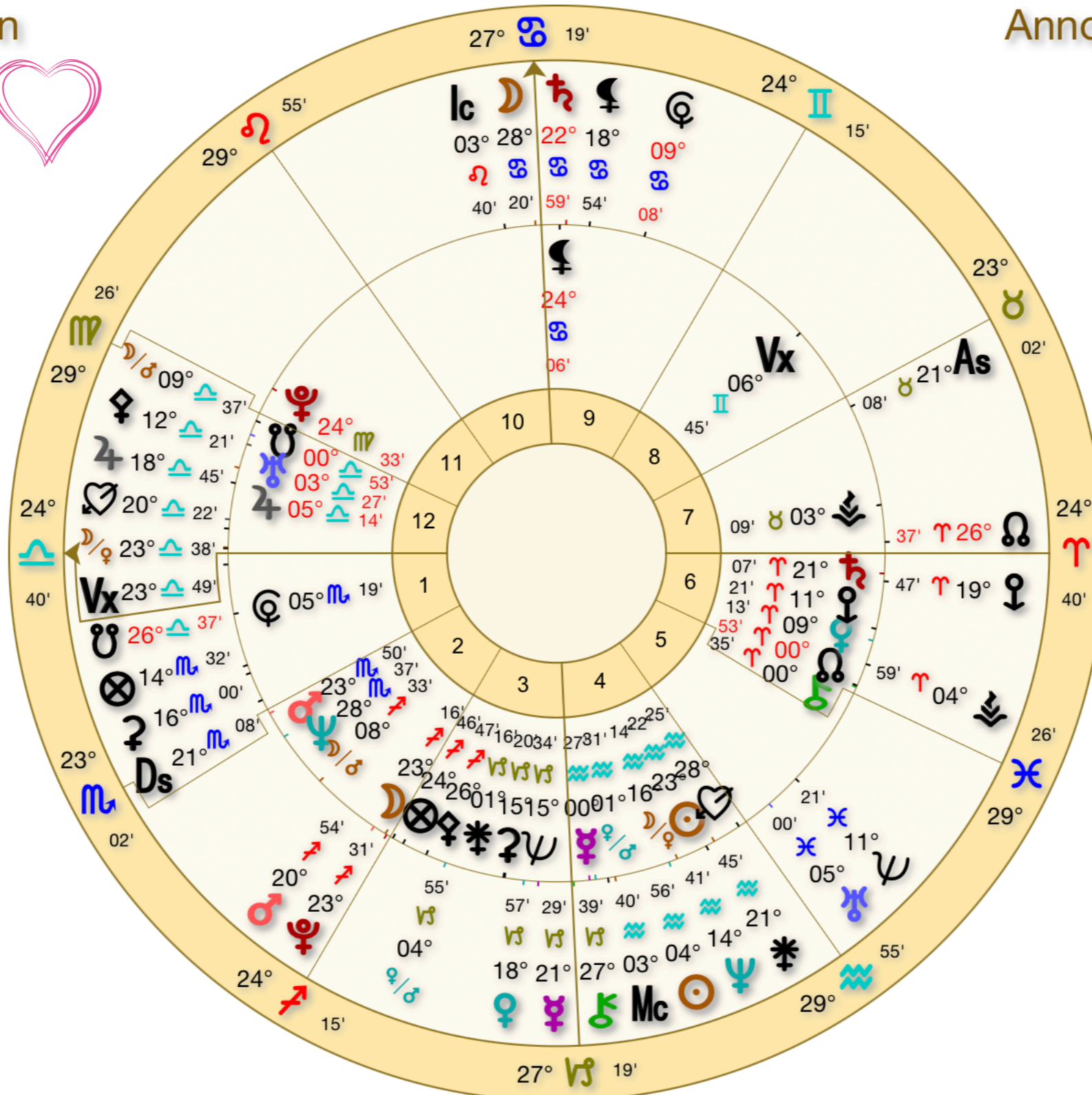
# Jennifer Aniston

Female  
 Inner Ring  
 Feb 11 1969, Tue  
 10:22 PM PST +8:00  
 Los Angeles, California  
 Geocentric  
 Tropical  
 Placidus

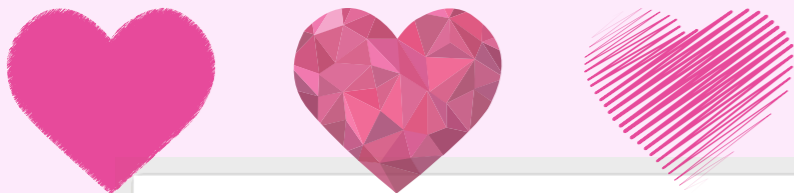


# Announce Break Up

Natal  
 Outer Ring  
 Jan 24 2005, Mon  
 12:00 PM PST +8:00  
 Los angeles, california  
 Geocentric  
 Tropical  
 Placidus



- Saturn conjunct midheaven, conjunct Lilith
- Pluto conjunct Moon! Mars is there also... square Pluto, trine Saturn
- Uranus trine Cupid
- Jupiter heading to conjunct ascendent, square Lilith, Tun, Sextile Moon, oppose Saturn
- Transiting nodes on the AC/DC line
- Chiron conjunct IC, preparing to conjunct all those Aquarius placements



## Brad Pitt

Male

Inner Ring

Dec 18 1963, Wed

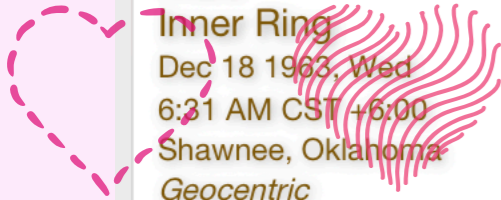
6:31 AM CST +6:00

Shawnee, Oklahoma

Geocentric

Tropical

Placidus



## Announce Break Up

Natal

Outer Ring

Jan 24 2005, Mon

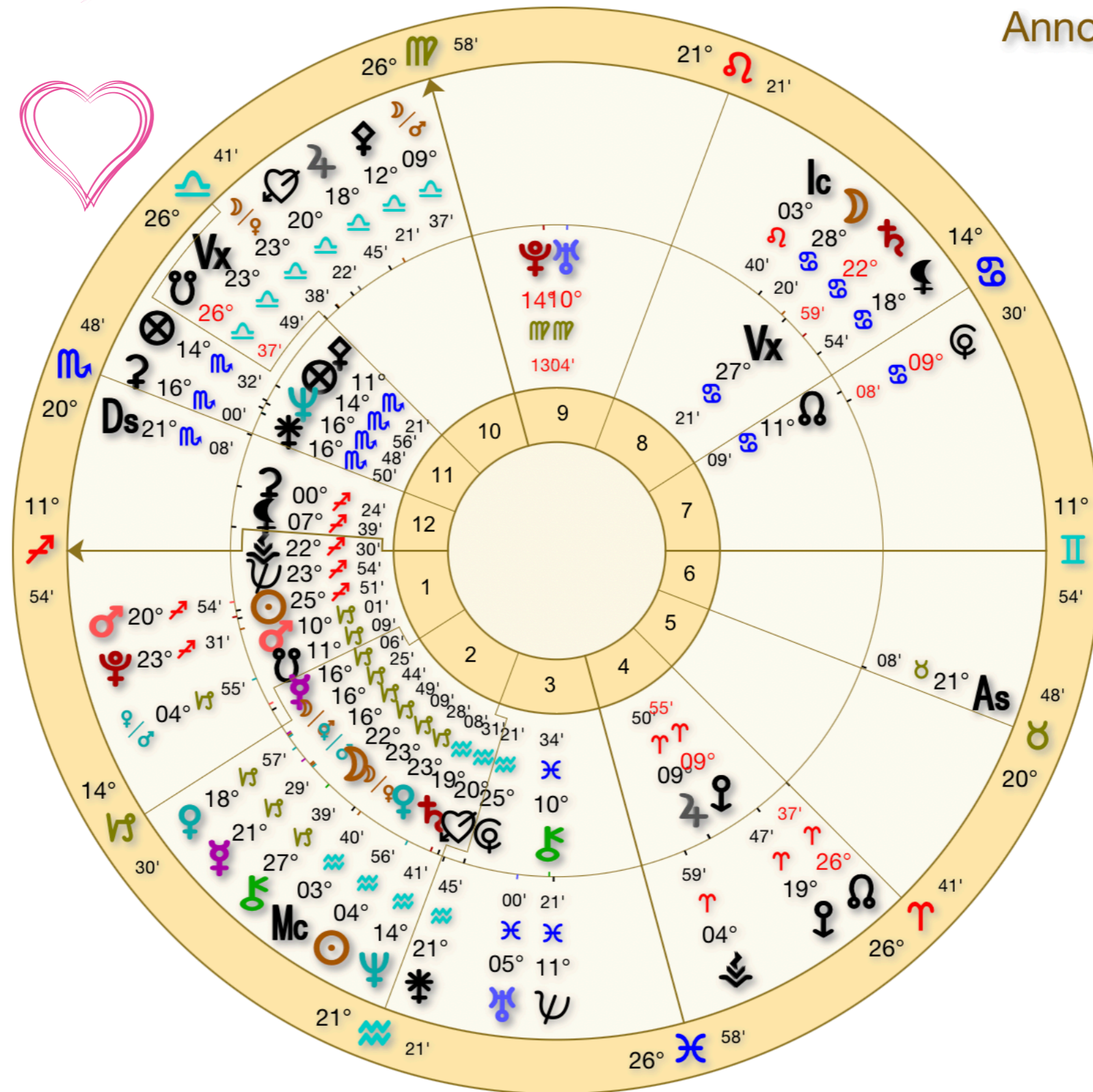
12:00 PM PST +8:00

Los angeles, california

Geocentric

Tropical

Placidus



- Pluto, conjunct sun, Sextile Saturn
- Jupiter Square all those Capricorn placements, trine Saturn
- Uranus square AC/DC line, conjunct Chiron, square Lilith
- Uranus gearing up for Uranus opposition, opposite Pluto, Sextile Mars

# Jennifer Aniston + Brad Pitt

Composite - Midpoints

Inner Ring

Feb 11 1969, Tue

10:22 PM PST +8:00

Los Angeles, California

Geocentric

Tropical

\*Composite

# Announce Break Up

Natal

Outer Ring

Jan 24 2005, Mon

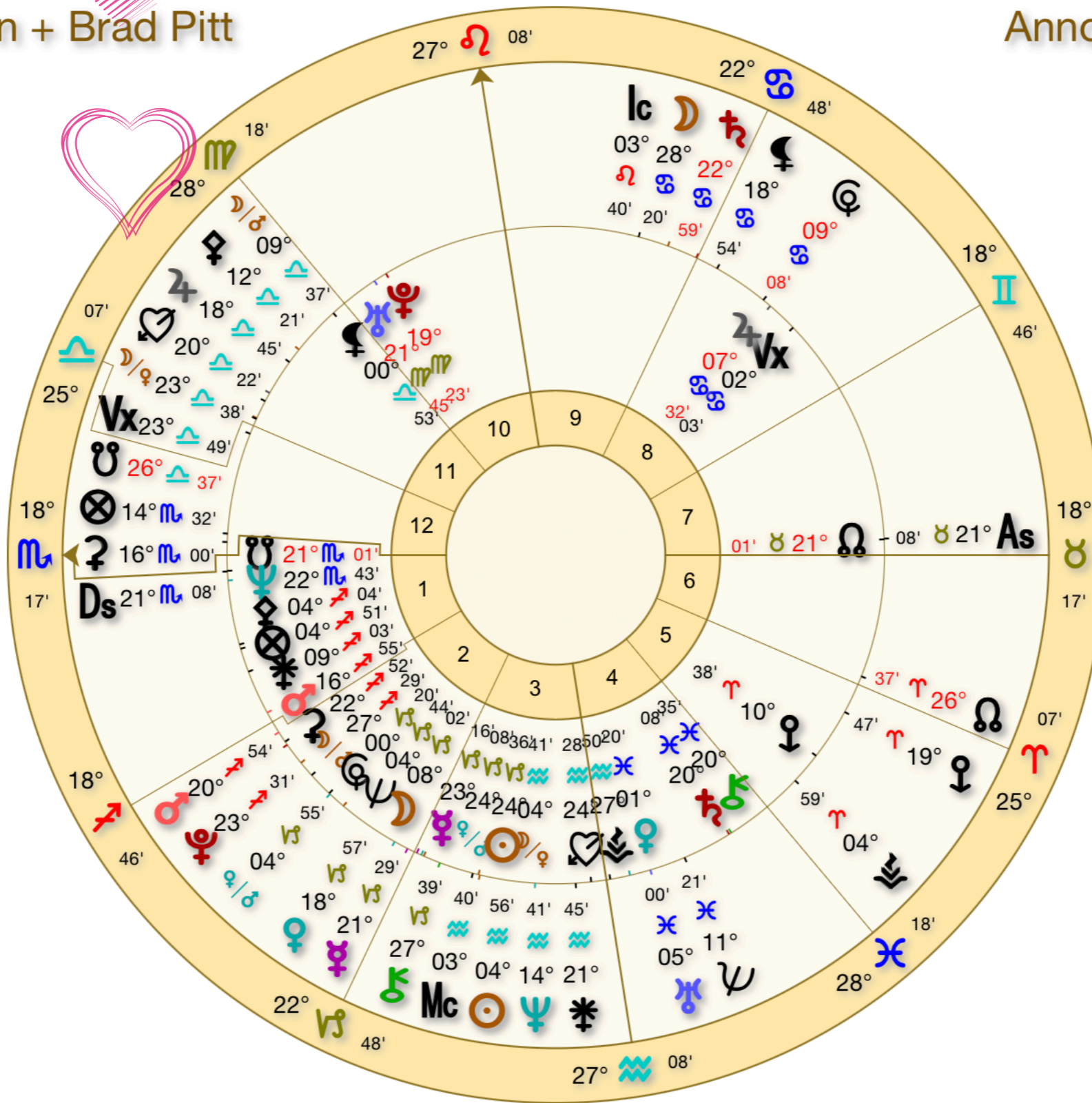
12:00 PM PST +8:00

Los Angeles, California

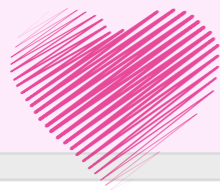
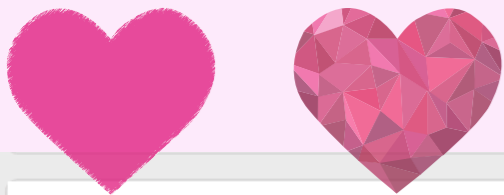
Geocentric

Tropical

Placidus



- Uranus conjunct Venus, Sextile moon
- Chiron conjunct, sun, mercury, Venus Mars, midpoint, gearing up to conjunct moon Venus, midpoint, sextile AC.
- Pluto conjunct Mars, moon, mars midpoint, square Pluto Uranus square Saturn, Chiron
- Jupiter squaring Capricorn placements, Sextile Sagittarius placements



# Ben Affleck

Male

Inner Ring

Aug 15 1972, Tue

2:53 AM PDT +7:00

Berkeley, California

Geocentric

Tropical

Placidus



# End Engagement

Natal

Outer Ring

Jan 22 2004, Thu

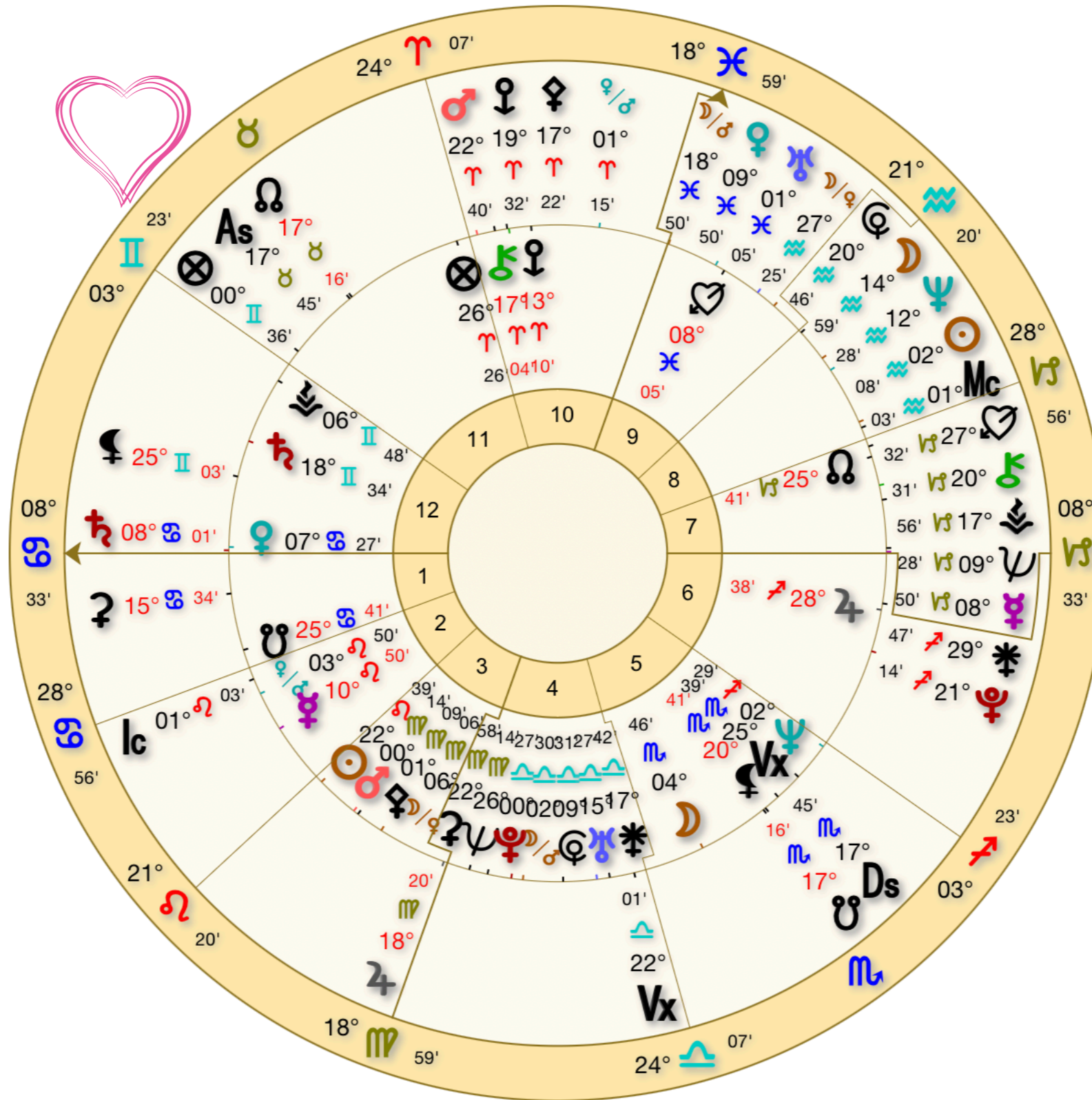
12:00 PM PST +8:00

Los Angeles, California

Geocentric

Tropical

Placidus

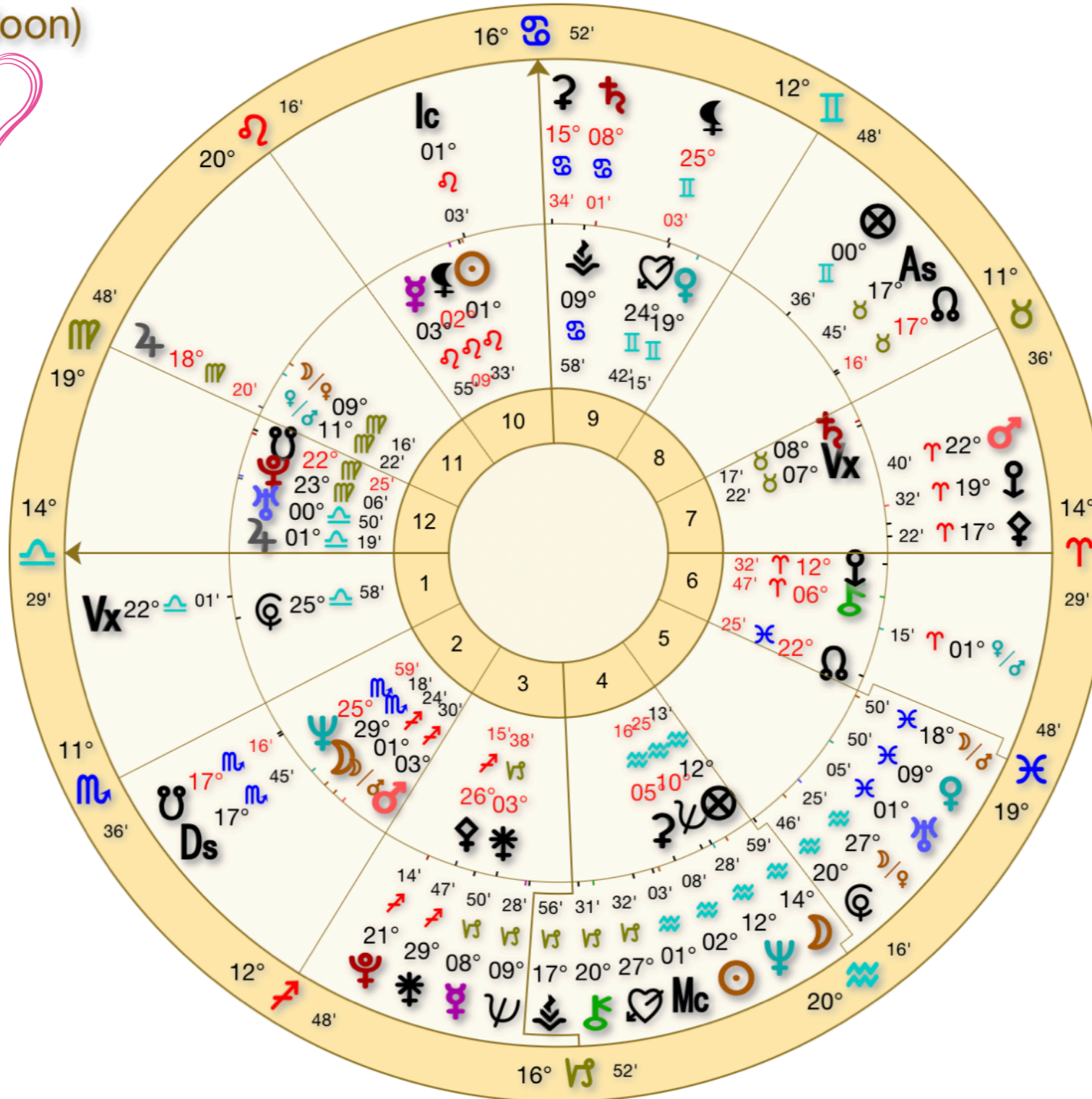


- Saturn conjunct AC, Venus, square Chiron, square Uranus, opposite DC
- Jupiter Square, Saturn, Square, Jupiter
- Uranus conjunct, trine Moon, AC
- Pluto, trine Sun, conjunct Jupiter
- Chiron conjunct North node, square Uranus, square Chiron
- Neptune gearing up to oppose sun, Trine Uranus, square, Sextile Chiron



## Jennifer Lopez (Noon)

Natal  
 Inner Ring  
 Jul 24 1969, Thu  
 12:00 PM EDT -4:00  
 Bronx, New York  
 Geocentric  
 Tropical  
 Placidus



## End Engagement

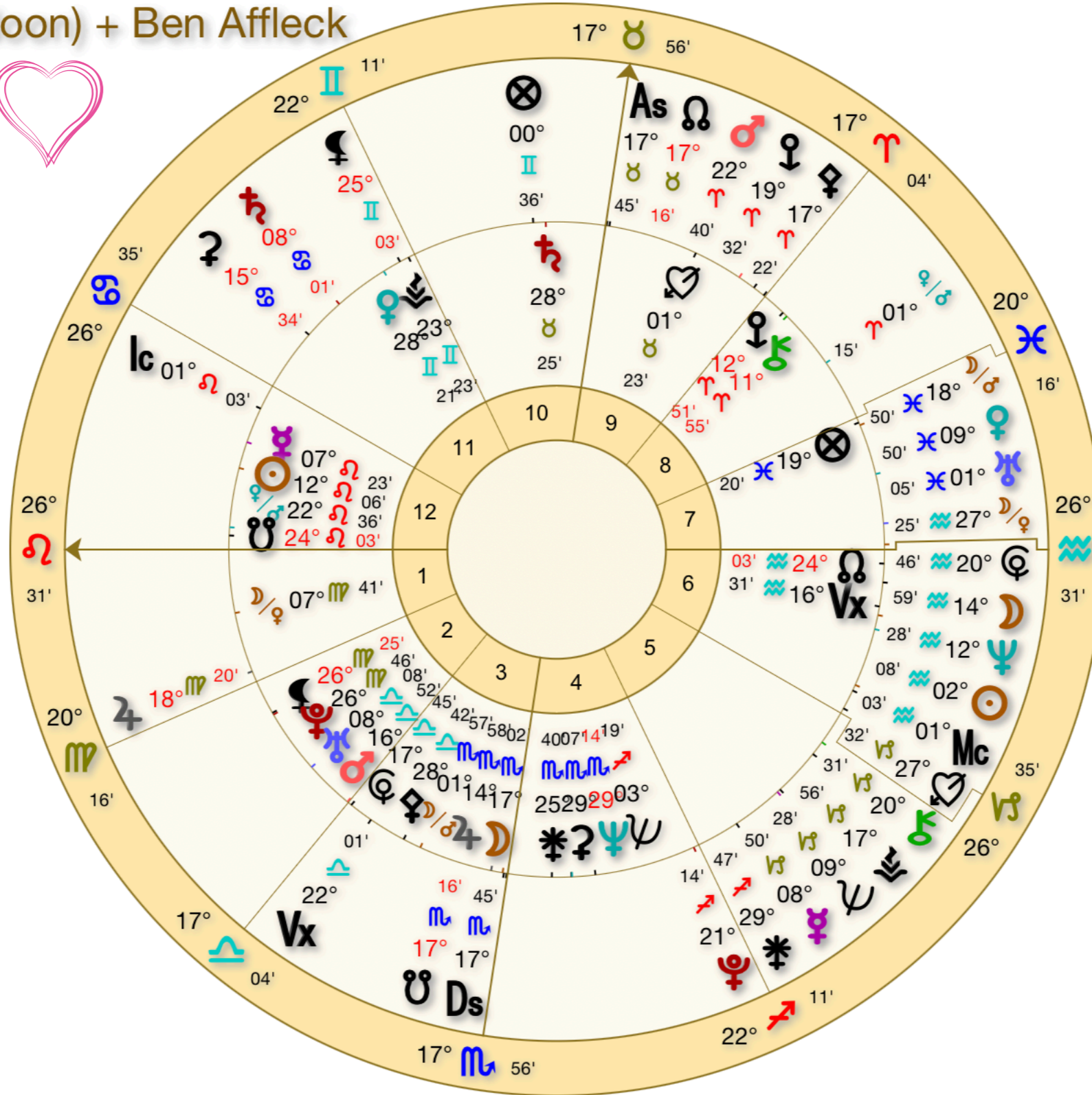
Natal  
 Outer Ring  
 Jan 22 2004, Thu  
 12:00 PM PST +8:00  
 Los Angeles, California  
 Geocentric  
 Tropical  
 Placidus

- Pluto square Pluto, squared the nodes, heading to conjunct Athena (Think about what Pluto is doing now!)
- Neptune trine ascendant, trine Venus
- Uranus square moon, square mars, square moon, mars midpoint, quincunx Sun
- Chiron conjunct, IC, square AC/DC line
- Saturn conjunct Vesta, Sextile, Saturn, moving to square AC/DC line, moving to conjunct, MC, square Jupiter
- Jupiter conjunct Virgo midpoint, conjunct south node, fresh off Saturn trine



# Jennifer Lopez (Noon) + Ben Affleck

Composite - Midpoints  
 Inner Ring  
 Jul 24 1969, Thu  
 12:00 PM EDT +4:00  
 Bronx, New York  
 Geocentric  
 Tropical  
 \*Composite



# End Engagement

Natal  
 Outer Ring  
 Jan 22 2004, Thu  
 12:00 PM PST +8:00  
 Los Angeles, California  
 Geocentric  
 Tropical  
 Placidus

- Neptune, opposition Sun exact! Square MC/IC line, square Jupiter moon
- Pluto Sextile, Mars, trying AC/DC line, square part of fortune, square Lilith, Pluto, oppose Venus
- Jupiter try Saturn, trying MC, conjunct Liz Sextile Jupiter Moon
- Chiron Sextile Moon, square Mars
- Saturn, moving to train Jupiter, square Chiron, square Mars,
- Uranus in the seventh house, fresh off a square to Saturn, fresh off of trying to Venus

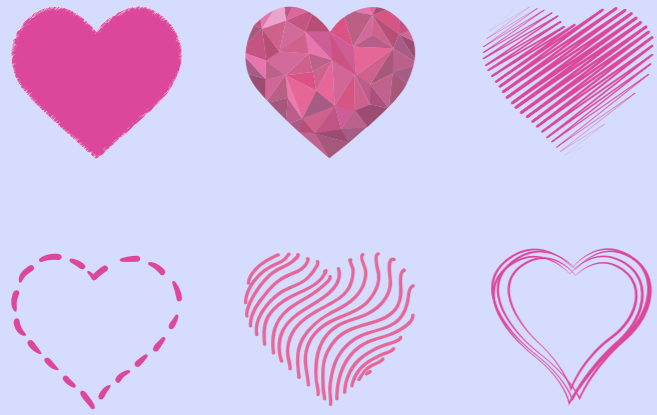


**Matthew Hussey** 

@matthewhussey

310-935-3460

Yes. It ended. But you have all the lessons. You still have your heart. You still have you. No one can kill your ability to love. In fact, getting hurt can make you bulletproof. Because you know how the pain feels. Now it's time to rise up again, and give yourself permission to move on.



# Thank You!



Nadiyashahdotcom



Nadiyashahdotcom

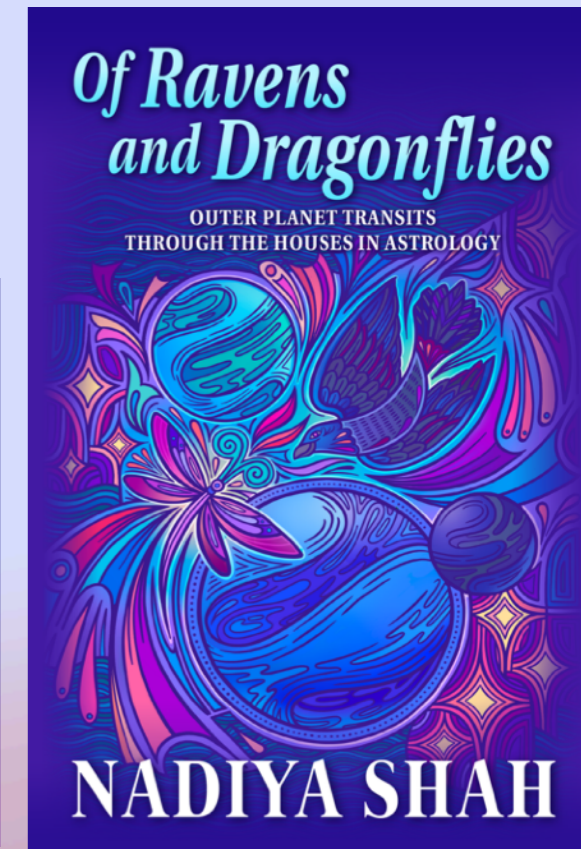
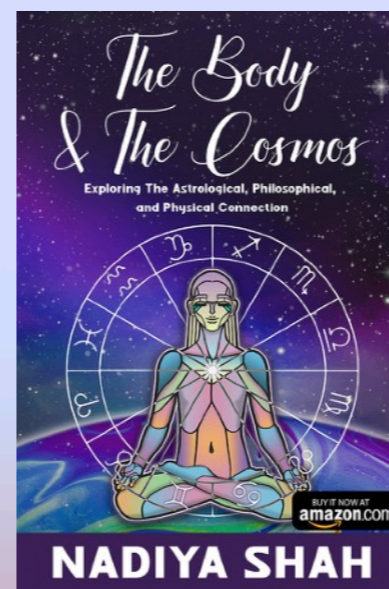
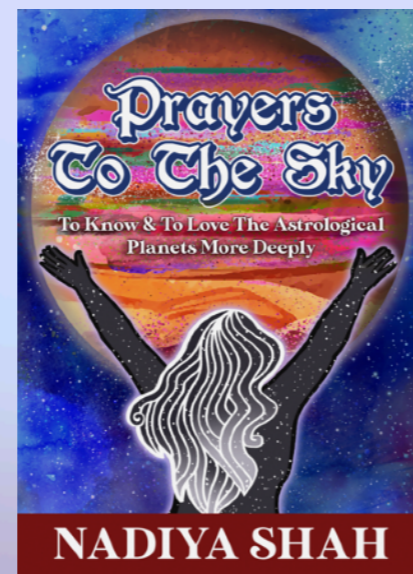
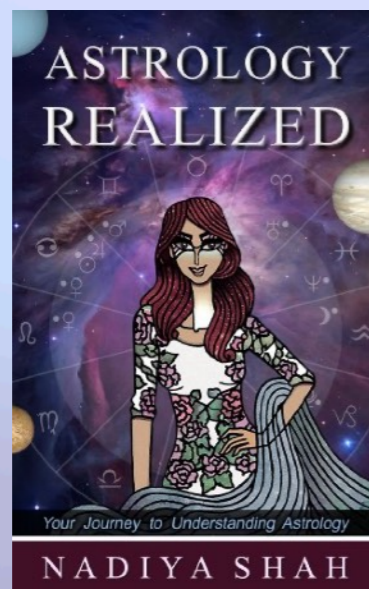
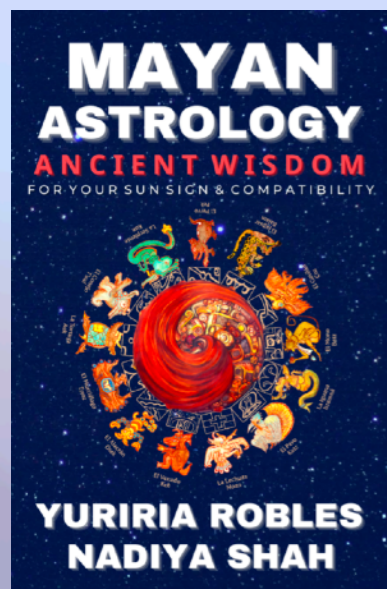


Nadiya.shah



@Nadiya\_shah

## The Universe Is Wise And Loving



Nadiya Shah. com.

Synchronicity University .com